



Transportation Workforce Institute

driving innovation

Mission *Ensure the Transportation industry has the requisite, skilled workforce to keep America's people and goods moving.*

Overview **Transportation Workforce Institute (TWI)**, established in 2015 with seed funding from a Federal Transit Administration (FTA) Innovative Public Transportation Workforce Development grant, is hosted by **Los Angeles Trade-Technical College (LATTC)**, making it the first of its kind to be led by a community college in the US. LATTC has a 90-year history of providing workforce training and transfer opportunities and serves over 23,000 students annually from the greater Los Angeles region. TWI and the college are located at the epicenter of substantial transit activity, with over 40 rail and bus lines serving the region.

Purpose TWI's purpose is to ensure a well-trained and diverse transportation workforce.

TWI's reach is national:

- Constructing and disseminating model, sharable curriculum and workforce development resources based on national industry standards and certifications

TWI's impact is regional:

- Leading industry, education, and workforce development partners in creating programs and services that meet immediate and long-term employer needs while connecting diverse communities and citizens through transportation projects and workforce development efforts

Key Strategies

Training

- Incumbent worker training for technicians in the transit and transportation sectors
- Construction prep training for programs such as **Women Building L.A. Metro** and **City of Los Angeles Workforce Preparedness Program**
- Curriculum development for industry partners to address workforce needs
- Development and deployment of the Transportation Youth Academy (TYA) for K-12 students creating awareness of careers in transportation

Meeting Sector and Regional Workforce Needs

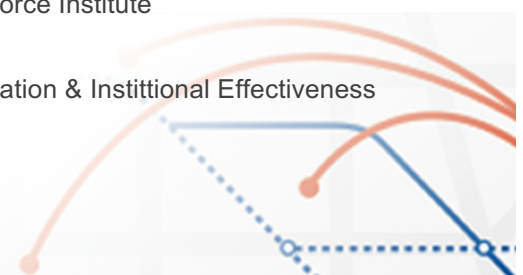
- Develop and implement action plans to address immediate and projected transportation workforce needs by convening regional employers, & workforce, economic, & community-development partners
- Create education programs for emerging, high-growth, & hard-to-fill occupations
- Implement interlinked K16, adult education, & apprenticeship pathways
- Broker programs & services to address employer workforce development priorities
- Translate national standards and certifications into model competency-based curriculum
- Construct & disseminating sharable, workforce development resources

Revitalize communities & connect citizens through transportation initiatives

- Serve as an intermediary for regional & state transportation projects
- Ensuring the transportation workforce represents the community it serves via outreach & recruiting citizens into workforce development programs
- Build gateway programs including pre-education & pre-employment preparation, support services, & work-based learning experiences; to increase education & employment success

Contacts

- **Jess Guerra**, Executive Director, Transportation Workforce Institute
guerraj@lattc.edu
- **Leticia Barajas**, Vice President, LATTC Pathway Innovation & Institutional Effectiveness
barajal@lattc.edu





Transportation Workforce Institute

driving innovation

Partners

